

ICURE® FAQ?

discover

Who is ICURE for?

Entrepreneurial leader (EL) - is the one who gets a group to truly operate as a team; creating collaboration and high performance that sparks more innovation."



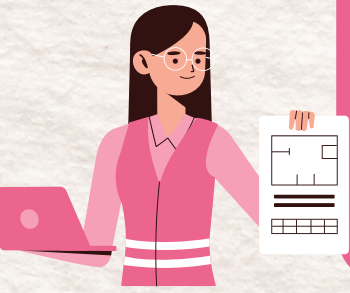
Principal Investigator (PI) - is the individual responsible for the preparation, conduct, and administration of a research grant, cooperative agreement, training or public service project, contract, or other sponsored project.



Business Advisor (BA) is a professional who provides clients with expertise in various aspects of business, such as development, management or financial security.



Technology Transfer Officers are dedicated to identifying research that has potential commercial interest and strategies for how to exploit it. They are usually created within a university in order to manage IP assets of the university, and the transfer of knowledge and technology to industry.



Public Sector Research Establishments (PSRE) support government by providing science advice to policymakers, by acting as a strategic capability in policy delivery and by delivering critical science services for government, business, and society.



Innovate
UK

ICURE® FAQ?

discover

What is ICURE Discover?

ICURE DISCOVER is a game-changing 8 week part-time online market discover programme, supporting researchers and technicians to discover more about their potential market, increase market awareness and gain deeper understanding of potential technology applications.



Can anyone be an Entrepreneurial Lead?

Yes, this can include but is not limited to, Ph.D., technician, PDRA, fellowship, and group leader positions.



Who is eligible?

The programme is open to all UK universities and approved public sector research enterprises, however, we are actively seeking applications from:

- Universities who have not participated in the 3-month ICURE programme.
- Universities who do not receive HEIF funding.
- Teams led by early career researchers and/or principal investigators who are from under-represented groups including women, people of colour, those living with disabilities and those from the LGBTQI+ communities.
- Teams from regional Universities.
- Approved PSREs.



Who should my team consist of?

Your team should consist of:

- Entrepreneurial Lead
- Principal Scientific Advisor often Senior Researcher/Principal Investigator
- Business Adviser (usually independent of your host institution)
- Technology Transfer Officer (TTO) or if PSRE your institutional equivalent through extensive market engagement globally.



What if I can't find a Business Advisor?

If you are unable to find an appropriate business advisor prior to application, we can help with recruiting an appropriate individual from a relevant industrial sector.



I am a non-UK national, can I participate in ICURE Discover?

Yes, provided you have the necessary visas allowing you to travel and work in the UK.



Am I eligible for ICURE Discover if I own the IP or if it is shared with a university/research organisation?

You are eligible to apply but will need to demonstrate that you have an appropriate team to support the commercialisation process.



Would combined student and University IP be considered?

Yes, but only with the full support of the host University TTO and research team.



Budget Administration

The university will likely set up a project code to receive ICURE funds under an existing cost centre code. A new procedure is now in place to assist Universities and PSREs in managing their digital testing and business advisor payments. Universities and PSREs can have partial or full control of their budgets. For the Teams, The Helix Way can directly book digital testing, LinkedIn premiums etc. They can also pay the BA directly at the end of the programme. This will be discussed at Bootcamp.



Innovate
UK

ICURE FAQ?

discover

Would IP that is being developed between a university/PSRE and company be eligible?

Yes, if the new IP is wholly owned by the University/PSRE and not in the business environment (privately).



Team formation

You can have an EL or PI involved in the project. However, please note that only one is funded for any travel costs and accommodation for team members to attend ICURE events such as bootcamp, training days and options roundabout if delivered in person.

In person Events

PI & EL are mandatory for in person, IUK travel budget will cover their costs in getting to venue so they need to make their own booking and claim back. IUK will cover accommodation and delegate fee for food when at venue for both EL and PI.

Options Roundabout- four team members (EL,PI,BA & TTO) are all expected to attend and IUK travel budget will cover their costs for travel costs and accommodation. Any additional team members may attend the options roundabout (e.g. additional PI) but additional members the cost won't be covered.



[ICURE Discover- ICURE Programme](#)



[ICURE | LinkedIn](#)



[ICURE \(@ICUREProgramme\) / Twitter](#)



Innovate
UK